



## **Proposal for Garden at The Birches Primary School—Nov.**

Daniel Monaghan

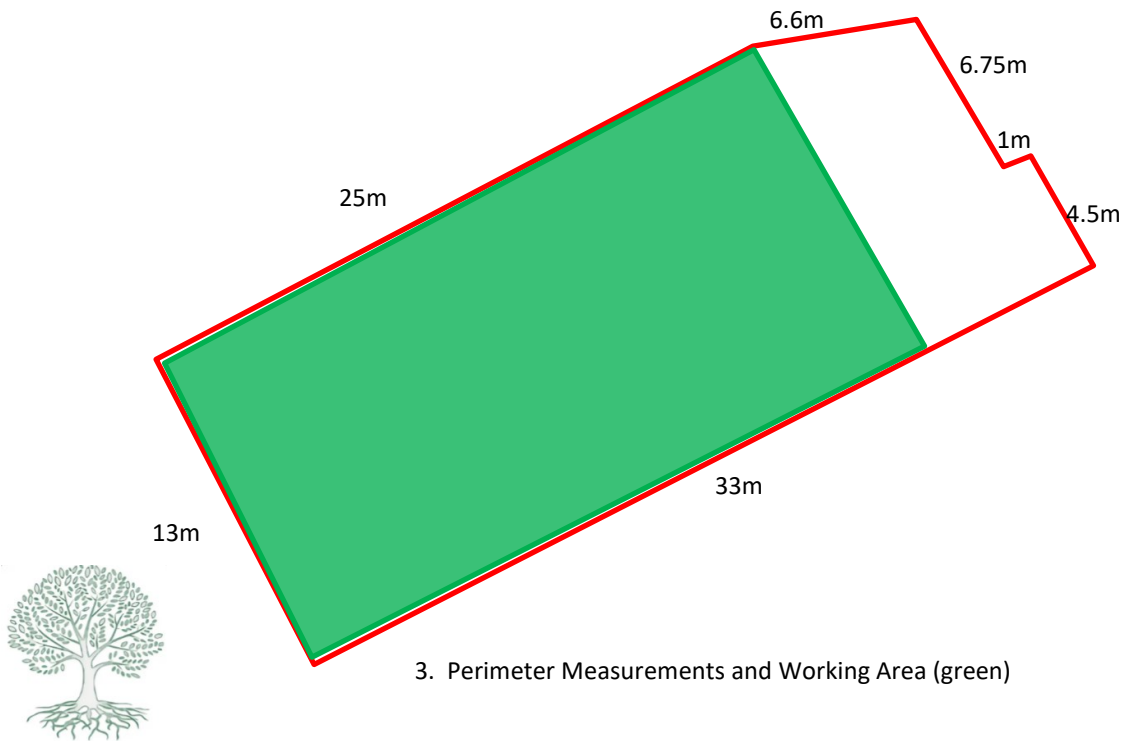




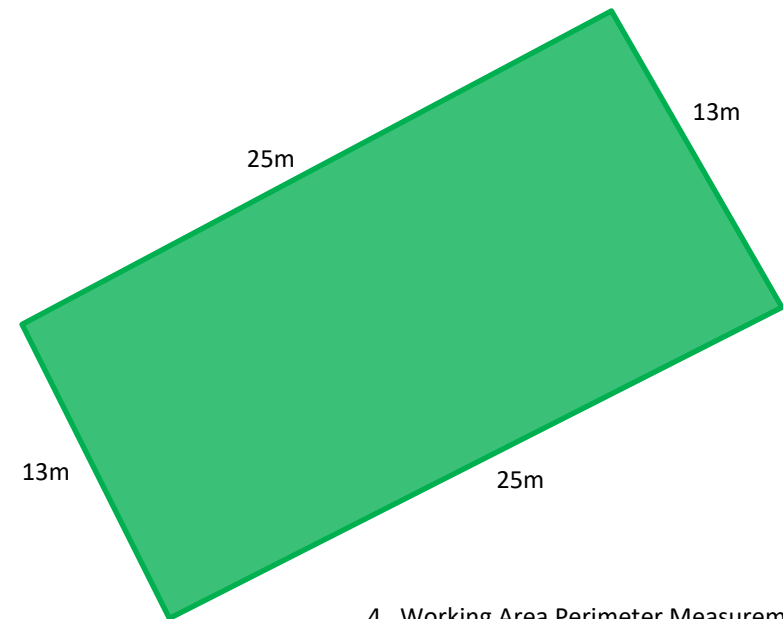
1. Site of garden area— 400m<sup>2</sup> total



2. Perimeter of garden area



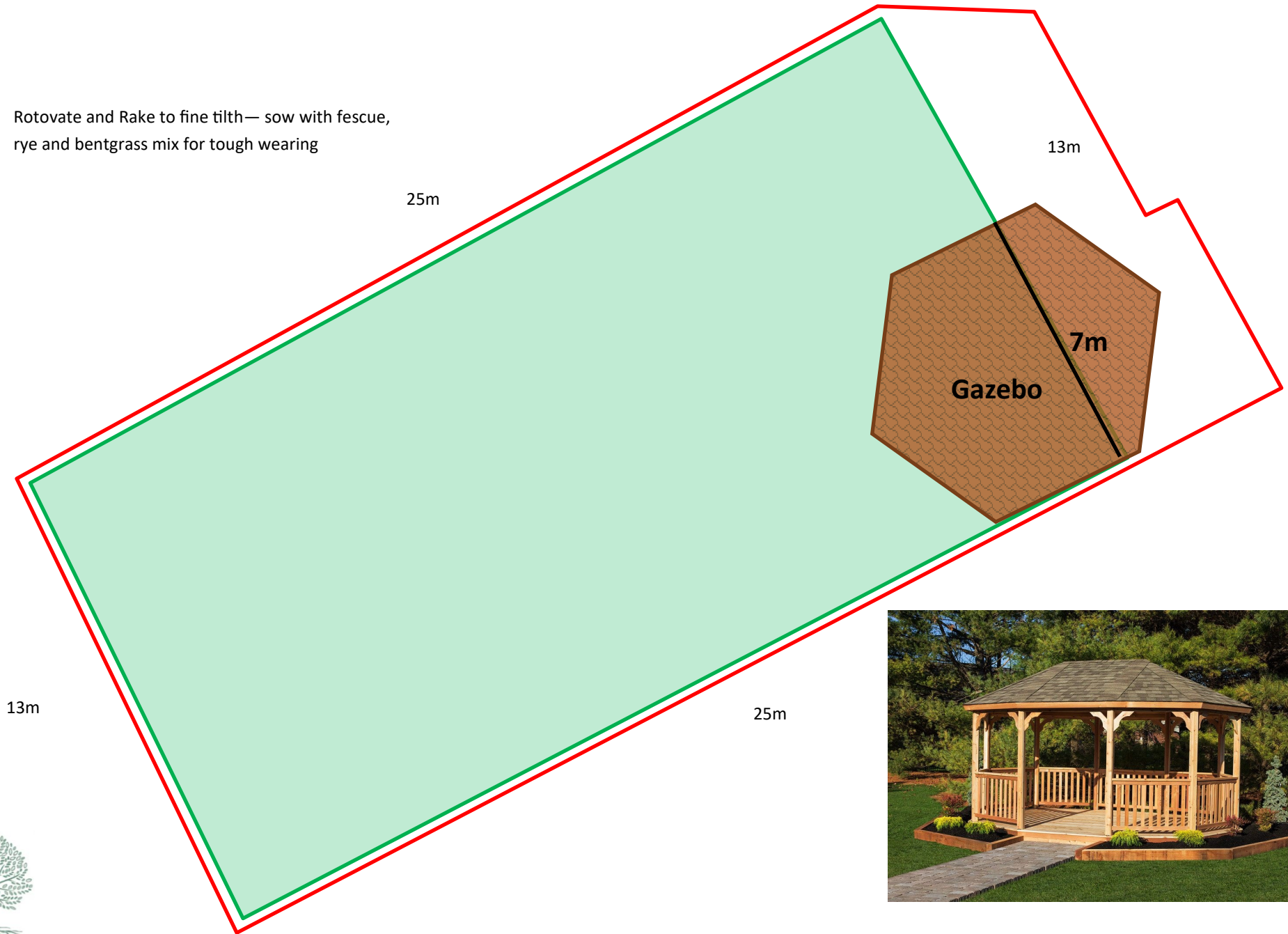
3. Perimeter Measurements and Working Area (green)



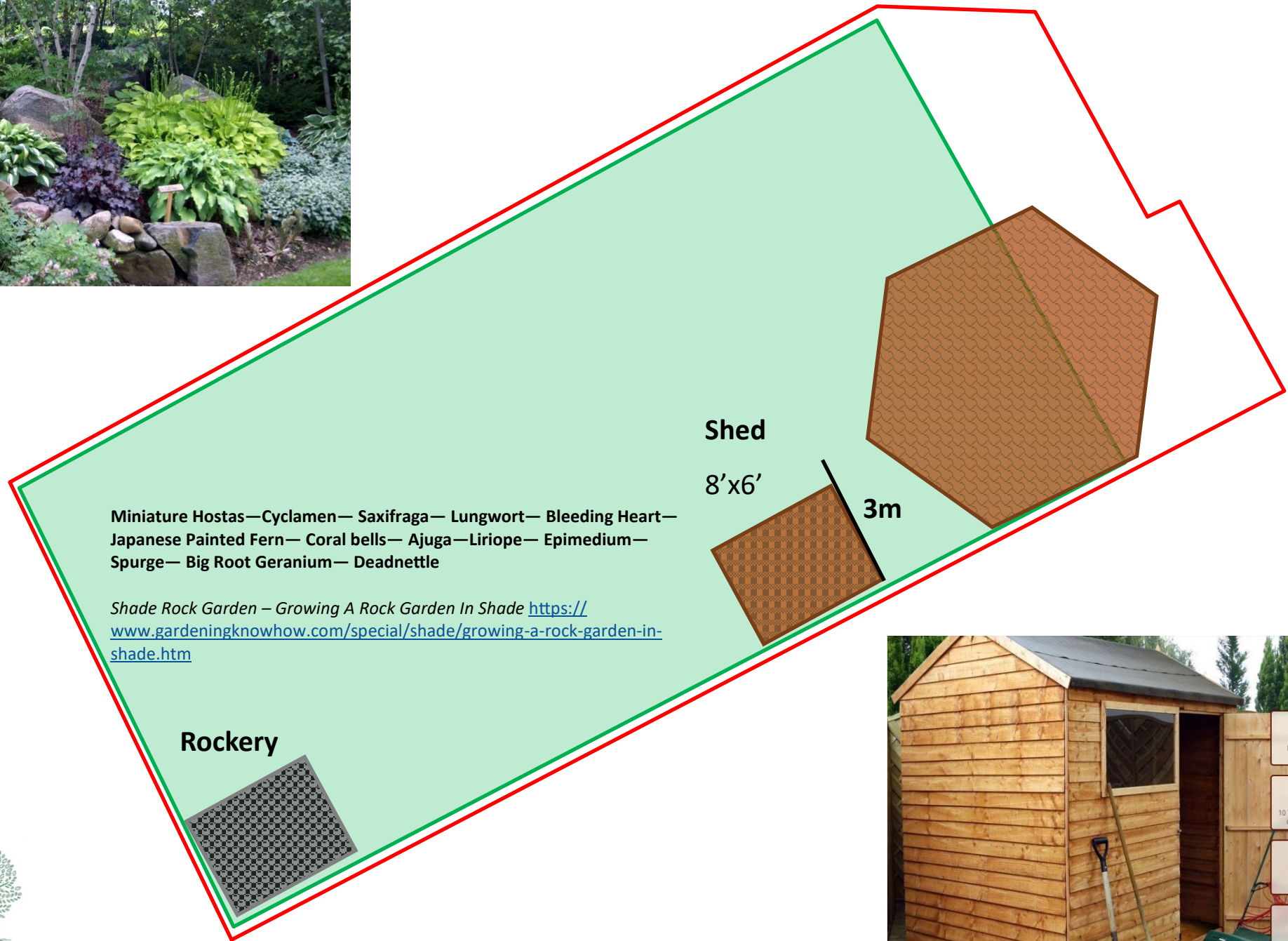
4. Working Area Perimeter Measurements

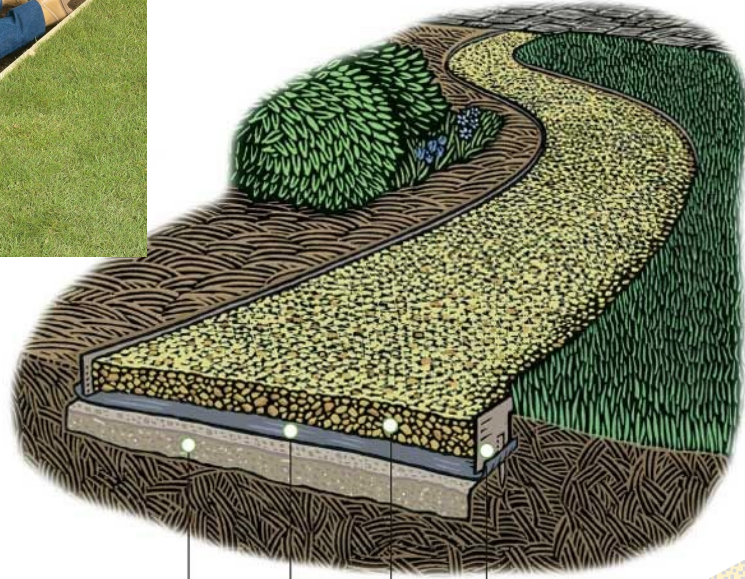


Rotovate and Rake to fine tilth— sow with fescue,  
rye and bentgrass mix for tough wearing









2 1/2 in. stone pack, compacted to 2 in.  
landscape fabric 2 in. gravel edging

**Gravel or  
Woodchip**







- [Aronia melanocarpa - Black Chokeberry](#)
- [Cornus mas - Cornelian Cherry](#)
- [Amelanchier lamarckii - Snowy Mespilus](#)
- [Sambucus nigra - Elder](#)
- [Elaeagnus umbellata - Autumn Olive](#)
- [Malus sylvestris - Crab Apple](#)





Picket Fence 25m

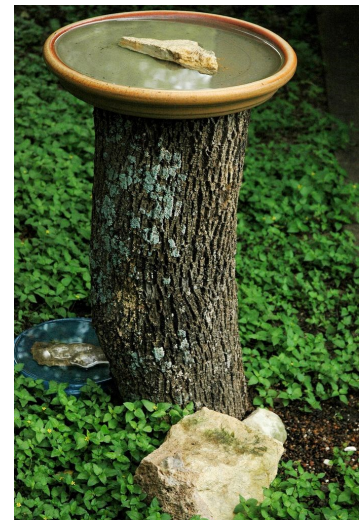


Cane Fruit

Planters

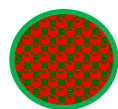
Bird Bath

Wild edge— let  
the weeds  
grow here!





Standard Tree  
(Silver Birch, Oak, Hazel)

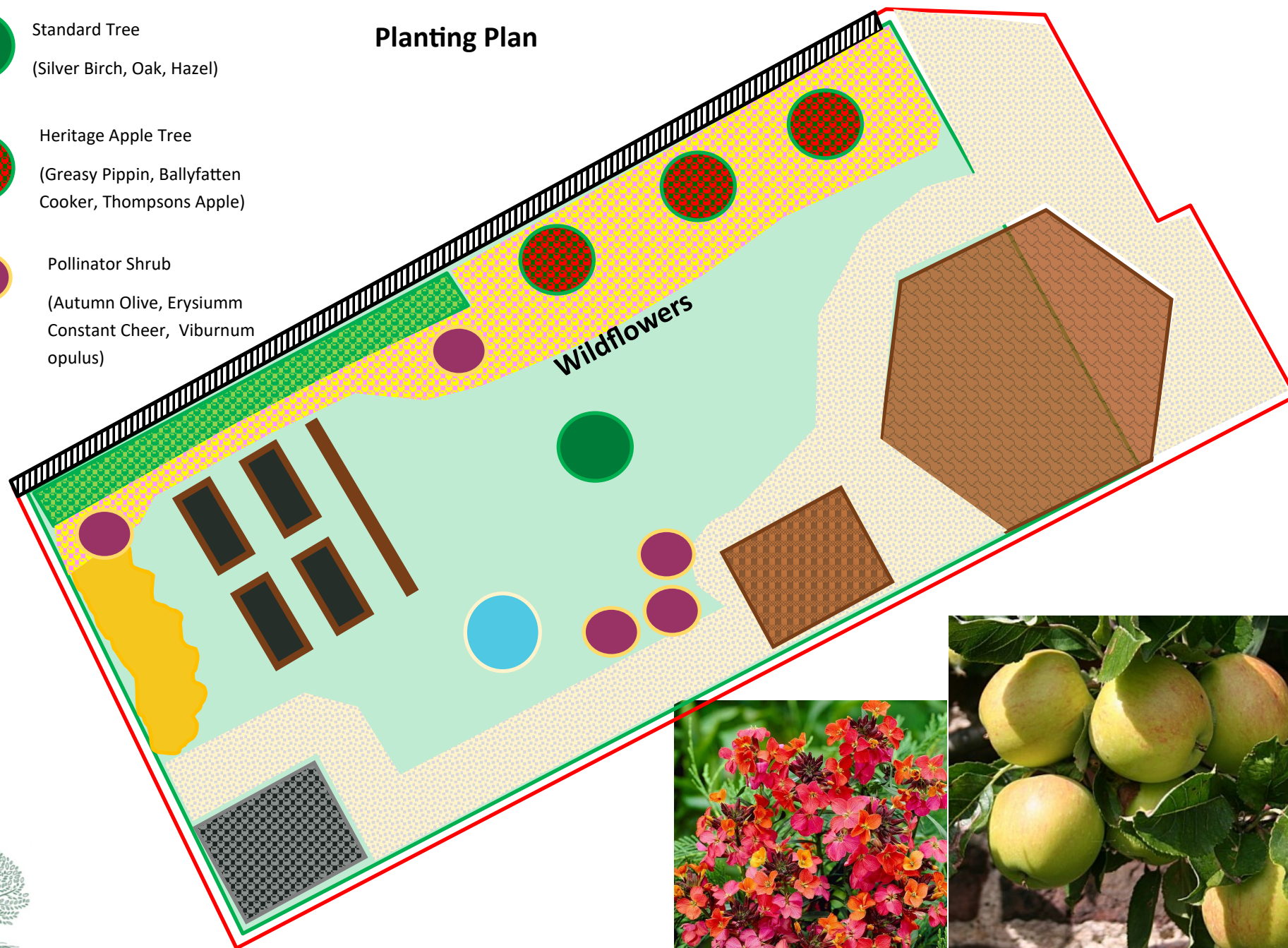


Heritage Apple Tree  
(Greasy Pippin, Ballyfatten  
Cooker, Thompsons Apple)



Pollinator Shrub  
(Autumn Olive, Erysiumm  
Constant Cheer, Viburnum  
opulus)

## Planting Plan





Thank you!

